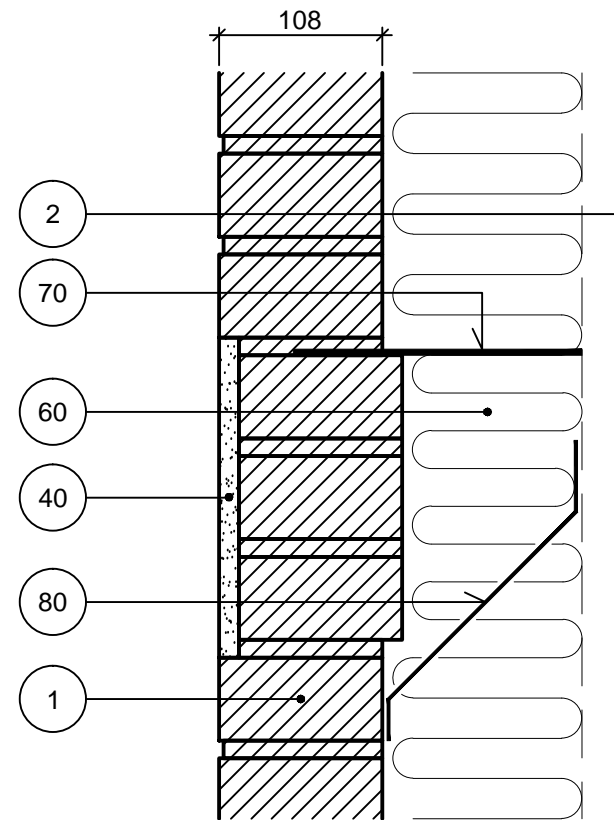
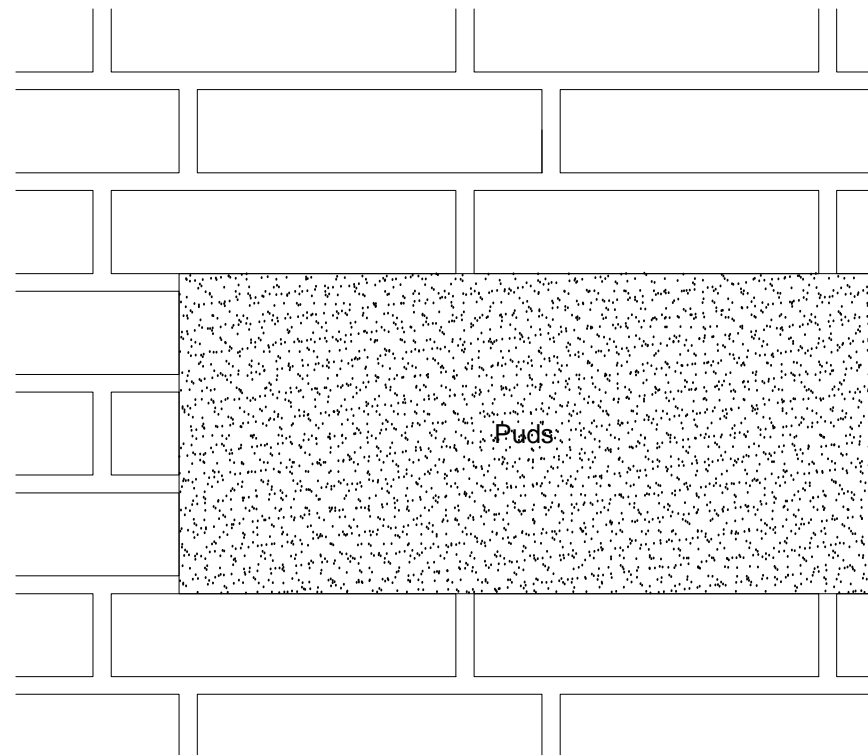


Løsning 1



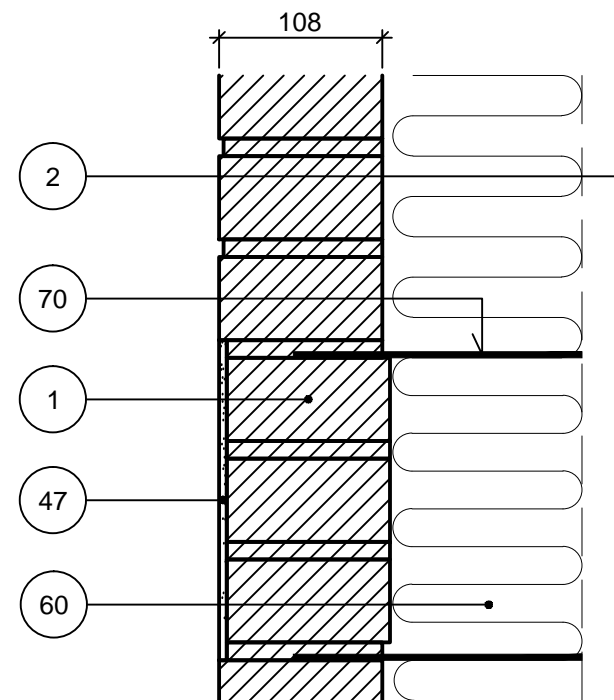
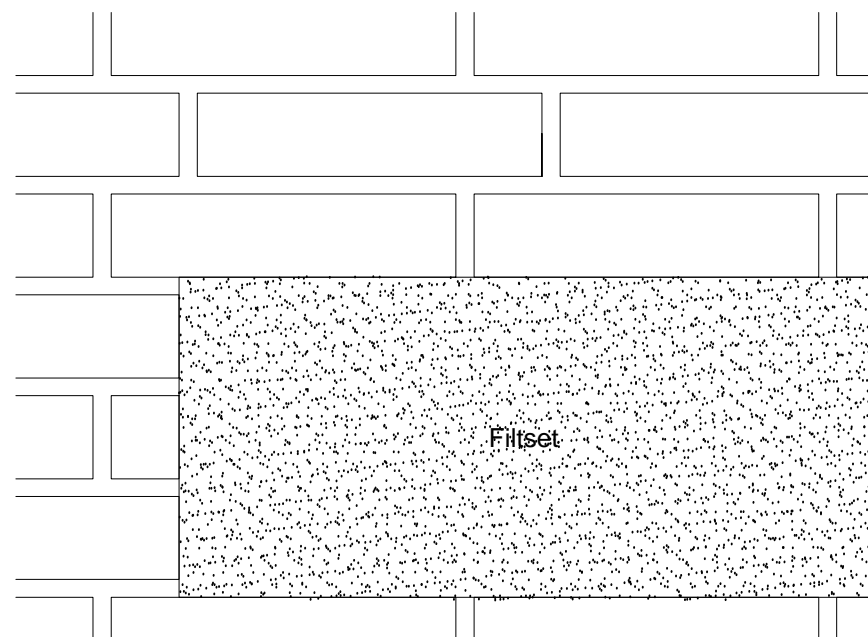
Formur (lodret snit)

Puds

Pudset felt

NOTE: Filtsele bånd er ikke velegnet i eksponeringsklasse MX3.2 og derover.  
Løsningen kan kræve forøget vedligehold.

Løsning 2



- 1 Tegls i formur
- 2 Bagmur
- 40 Puds
- 47 Filtset
- 60 Isolering
- 70 Trådbinder
- 80 Fugtspærre

U5UE

1.2.2013

Tegningshistorik

1.1.1997 - U5I

1.6.1999

1.3.2006