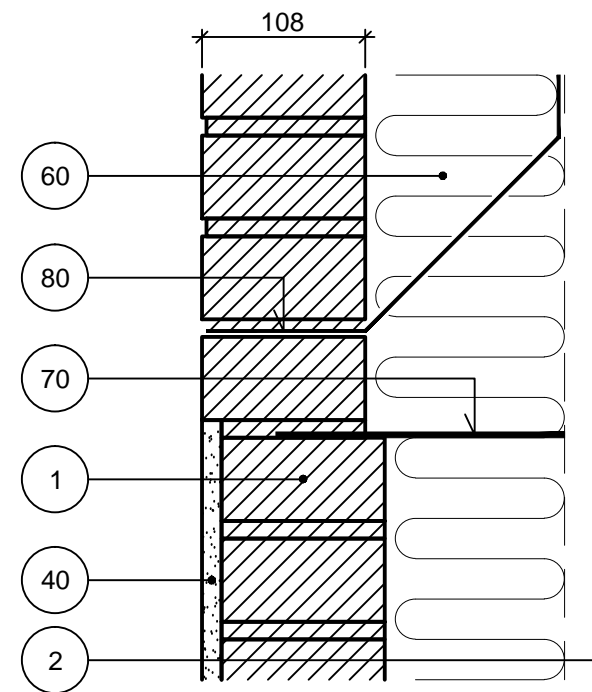
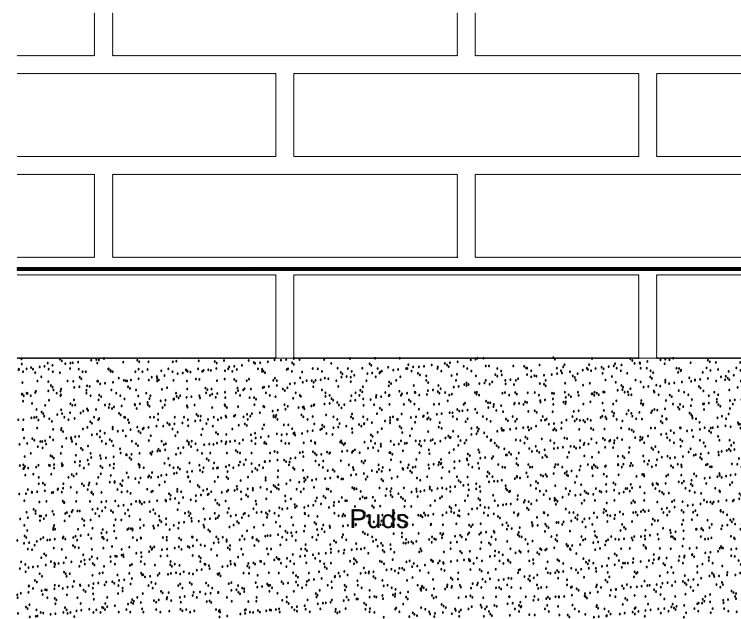


Formur (lodret snit)

Puds

Overgang fra blank til tilbagetrukket pudset murværk



- 1 Tegls i formur
- 2 Bagmur
- 40 Puds
- 60 Isolering
- 70 Trådbinder
- 80 Fugtsperre

U5UA

1.2.2013

Tegningshistorik

1.1.1997 - U5A

1.6.1999

1.3.2006